



WINDOW MECHANIX PVT. LTD.



Complete Range of uPVC Door & Window Hardware



CATALOG 
2020

COMPANY PROFILE

The founders of Window MechaniX Pvt. Ltd. established the manufacturing unit in Bhiwadi (NCR) in the year 2013. We have 20 Years experience in this Field. Today, with more than 800 satisfied customers across pan India, we are known for our excellent quality and service delivery. Our esteemed clients trust us by unfolding their vision to us and we stand up to their expectation by providing the best assistance to convert their dreams into reality.

WHY WINDOW MECHANIX

- ◆ Wide Product Range
- ◆ Only Virgin Raw Material usage for production
- ◆ Least turn around time
- ◆ Pan India Presence
- ◆ Value for Money
- ◆ 100+ manpower ready for service
- ◆ No hidden charges

VISION

To be the market leader in fenestration industry by being the best manufacturer of all accessories of uPVC Door & Windows.

MISSION

To provide best product with sustainable quality & pricing and with customization as per client requirement and instant after sales service.

- 01. SPACER BLOCK 14MM
- 02. SPACER BLOCK 20MM



03. 'C' HANDLE



04. SPACER BLOCK SQUARE

PRODUCT CODE : WMXSBS



05. ANTLIFT SASH

PRODUCT CODE : WMXALS



06. ANTLIFT



07. GLASS LOUVER

PRODUCT CODE : WMXGLR



08. CASEMENT WEDGE

PRODUCT CODE : WMXCW



09. CAVITY LOCK

PRODUCT CODE : WMXCL



10. FASTENER CAP

PRODUCT CODE : WMXFC



11. DRAINAGE CAP

PRODUCT CODE : WMXDC



12. BUMP STOPPER



13. DE-ATTACHABLE HANDLE HOLDER

PRODUCT CODE : WMXDHH



14. GLASS PACKER



15. INSTALLATION PACKER



WMXGP1630	16 X 60 X 3MM	WMXGP1650	16 X 60 X 5MM
WMXGP2430	24 X 60 X 3MM	WMXGP2450	24 X 60 X 5MM
WMXGP2483	24 X 80 X 3MM	WMXGP2485	24 X 80 X 5MM

WMXIP15	54 X 33 X 1.5MM	WMXIP61	60 X 33 X 1.5MM	WMXIP10515	105 X 33 X 1.5MM
WMXIP30	54 X 33 X 3MM	WMXIP63	60 X 33 X 3MM	WMXIP10530	105 X 33 X 3MM
WMXIP50	54 X 33 X 5MM	WMXIP65	60 X 33 X 5MM	WMXIP10550	105 X 33 X 5MM

16. 'C' HANDLE AL



17. KEEP



18. MECHANICAL JOINT

PRODUCT CODE : WMXMCJ30 - 30 X 35 X 35
 PRODUCT CODE : WMXMCJ16 - 16 X 60 X 60



19. SELF DRILL SCREW



WMXSDS3913	3.9 X 13 MM	WMXSDS3932	3.9 X 32 MM
WMXSDS3916	3.9 X 16 MM	WMXSDS3938	3.9 X 38 MM
WMXSDS3919	3.9 X 19 MM	WMXSDS4850	4.8 X 50 MM
WMXSDS3925	3.9 X 25 MM	WMXSDS4860	4.8 X 60 MM

20. SELF TAPPING SCREW



WMXSTS4016	4 X 16 MM	WMXSTS4035	4 X 35 MM
WMXSTS4020	4 X 20 MM	WMXSTS550	5 X 50 MM
WMXSTS4025	4 X 25 MM	WMXSTS560	5 X 60 MM
WMXSTS4030	4 X 30 MM	WMXSTS575	5 X 75 MM

21. HANDLE SCREW



WMXMS20	M5 X 20	WMXMS50	M5 X 50
WMXMS35	M5 X 35	WMXXMS80	M5 X 80

22. ANCHOR FASTENER



WMXNHF8	M8 X 80
WMXNHF	M8 X 100

23. ROUTING BIT

PRODUCT CODE : WMXRB8 - 8 X 8 X 100
 PRODUCT CODE : WMXRB6 - 6 X 8 X 120
 PRODUCT CODE : WMXRB80 - 6 X 8 X 80



24. DRAINAGE BIT

PRODUCT CODE : WMXDB6 - 5 X 6 X 80
 PRODUCT CODE : WMXDB8 - 5 X 8 X 80



25. STEP DRILL BIT

PRODUCT CODE : WMXSDB - 8 X 12



26. T SLOT CUTTER

PRODUCT CODE : WMXTSC



27. MOONKNIFE (DONKARLOS)

PRODUCT CODE : WMXMKDS



28. SCREW GUIDE PLATE

PRODUCT CODE : WMXSGPE



29. GASKIT & MESH PRESSING ROLLER

PRODUCT CODE : WMXGFR



30. GLAZING PADDLE

PRODUCT CODE : WMXGP



31. TEFLON CLOTH

PRODUCT CODE : WMXTP



32. BACKER ROD



WMXBR6	6MM
WMXBR10	10MM
WMXBR15	15MM

33. WOOL PILE



WMXWP48	4.8 X 6
WMXWP66	6 X 6
WMXWP68	6.8 X 6

34. EPDM GASKIT

PRODUCT CODE : WMXGKB



35. WIRE MESH SS 304 / FIBRE MESH



36. ONE SIDE KEY DOOR HANDLE



37. PUSH LOCK

PRODUCT CODE : WMXPL



38. POP UP HANDLE

PRODUCT CODE : WMXPUH



39. ADJUSTABLE ROLLER

PRODUCT CODE : WMXATR



40. DOUBLE WHEEL ROLLER

PRODUCT CODE : WMXDWR



41. SINGLE WHEEL ROLLER BALL BEARING

PRODUCT CODE : WMXSRBB



42. SINGLE WHEEL ROLLER GROOVED/FLAT

PRODUCT CODE : WMXSWR



43. NYLON MESH ROLLER

PRODUCT CODE : WMXSWS



44. SLIDING L HANDLE

PRODUCT CODE : WMXSLH



45. SHORT NECK HANDLE

PRODUCT CODE : WMXSNH



46. ALLEN KEY HANDLE

PRODUCT CODE : WMXAKH



47. CASEMENT HANDLE WITH KEY

PRODUCT CODE : WMXCHK



48. CASEMENT HANDLE

PRODUCT CODE : WMXCH



49. CASEMENT HANDLE INLINE

PRODUCT CODE : WMXCHI



50. COCKSPUR HANDLE

PRODUCT CODE : WMXCH



51. CRESCENT LOCK

PRODUCT CODE : WMXCLK



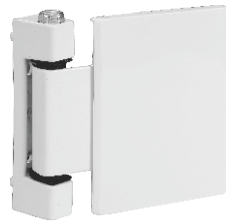
52. 3D HINGE

3D HINGE - LIGHT
3D HINGE - HEAVY



53. FLAT HINGE

PRODUCT CODE : WMXFH



54. L HINGE

PRODUCT CODE : WMXLH



55. SLIDING ESPAG



Product Code	Product Description
WMXSPG40	400MM 7.5MM BKST
WMXSPG60	600MM 7.5MM BKST
WMXSPG80	800MM 7.5MM BKST
WMXSPG10	1000MM 7.5MM BKST
WMXSPG12	1200MM 7.5MM BKST
WMXSPG14	1400MM 7.5MM BKST
WMXSPG16	1600MM 7.5MM BKST
WMXSPG18	1800MM 7.5MM BKST

56. CASEMENT ESPAG



Product Code	Product Description
WMXCPCG40	400MM 22MM BKST
WMXCPCG60	600MM 22MM BKST
WMXCPCG80	800MM 22MM BKST
WMXCPCG10	1000MM 22MM BKST
WMXCPCG12	1200MM 22MM BKST
WMXCPCG14	1400MM 22MM BKST
WMXCPCG16	1600MM 22MM BKST

57. MORTISE NON-LOCK/BATHROOM SET

PRODUCT CODE : WMXMLCD



58. SHOOT BOLT

PRODUCT CODE : WMXSTBT



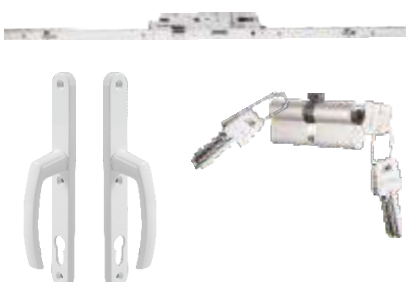
59. FRICTION STAY

PRODUCT CODE : WMXFS



60. CASEMENT DOOR SET 1800MM

PRODUCT CODE : WMXC DST



61. SLIDING DOORSET LOCKABLE 1800MM

PRODUCT CODE : WMXSDL



62. STAY ARM

PRODUCT CODE : WMXSA





WINDOW MECHANIX PVT. LTD.

Plot No. H1/13 (G), Riico Industrial Area, Kahrani,
Bhiwadi- 301019, Alwar Dist. (Rajasthan), India

E-mail:- windowmechanix@gmail.com

Mob :- +91-9873778898 | +91-9887323835 | +91-7231890333



Kreazon # 9911298074, 9818012039